

Contents

1. Download and Install the “Cadence Download Manager”2

2. Cadence License Manager installation3

3. SPB 25.1 Software installation.....9

4. FAQ13

1. Download and Install the “Cadence Download Manager”

Important notice, for a smooth installation process you need administrator privileges!

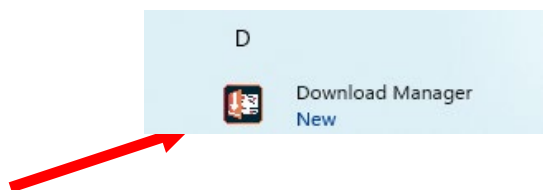
To perform Cadence software download and installation we use a utility called “Cadence Download Manager”. For SPB 25.1 you need the latest version of the “Cadence Download Manager”. Download it from:

<https://my.hidrive.com/lnk/WfbURnYJJ>

Once the download is finished you can execute this file to run the installation of the “Cadence Download Manager”.

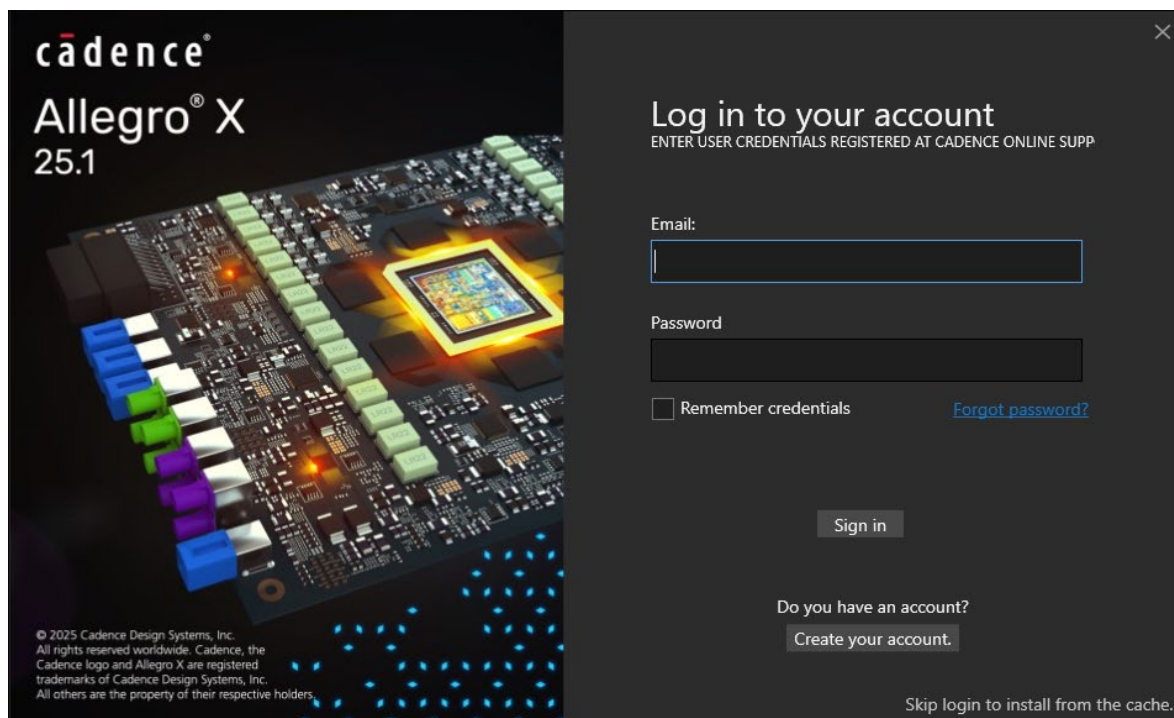
Start the “Cadence Download Manager” from the Windows start menu:

Start -> Download Manager



If this is the first time you start the “Cadence Download Manager” you need to provide your Cadence support account credentials. Fill in your support.cadence.com login details and click Sign in.

If you’ve no account at support.cadence.com yet, click on Create your account and follow the steps described in [this](#) document.



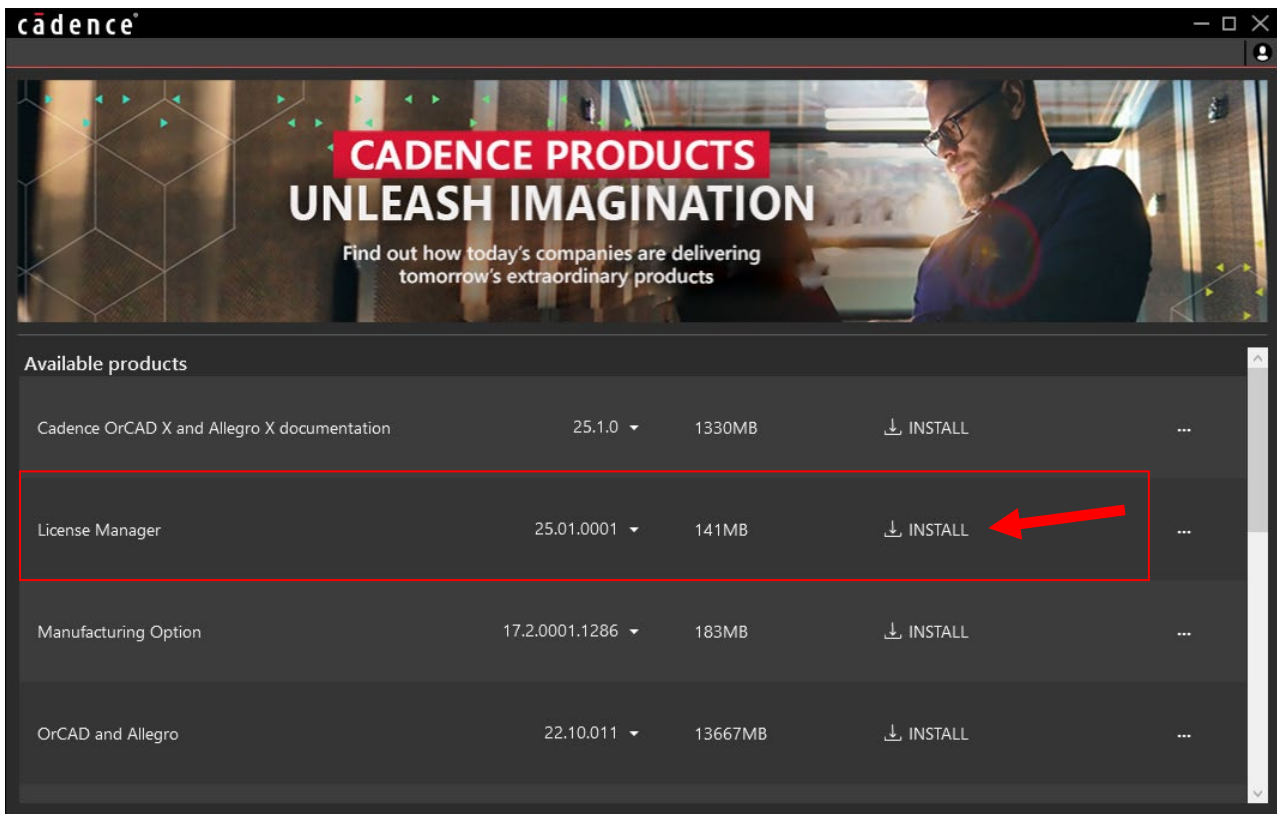
2. Cadence License Manager installation

The Cadence software is licenced by FlexLM software. If you plan to use a local license or need to install the license on a server, continue with this step. Only if the License Manager software pre-exist on an existing server, you can skip this step.

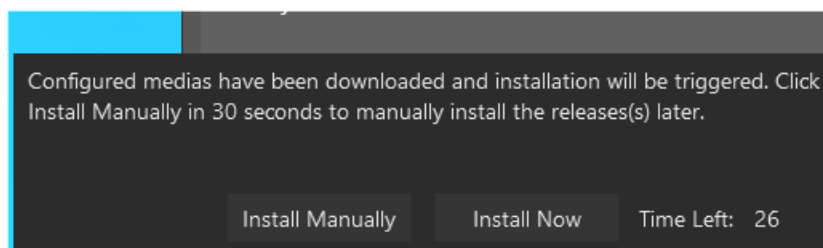
In previous step you started the “Cadence Download Manager”, provided your login details and signed in.

Select “License Manager” and press on INSTALL.

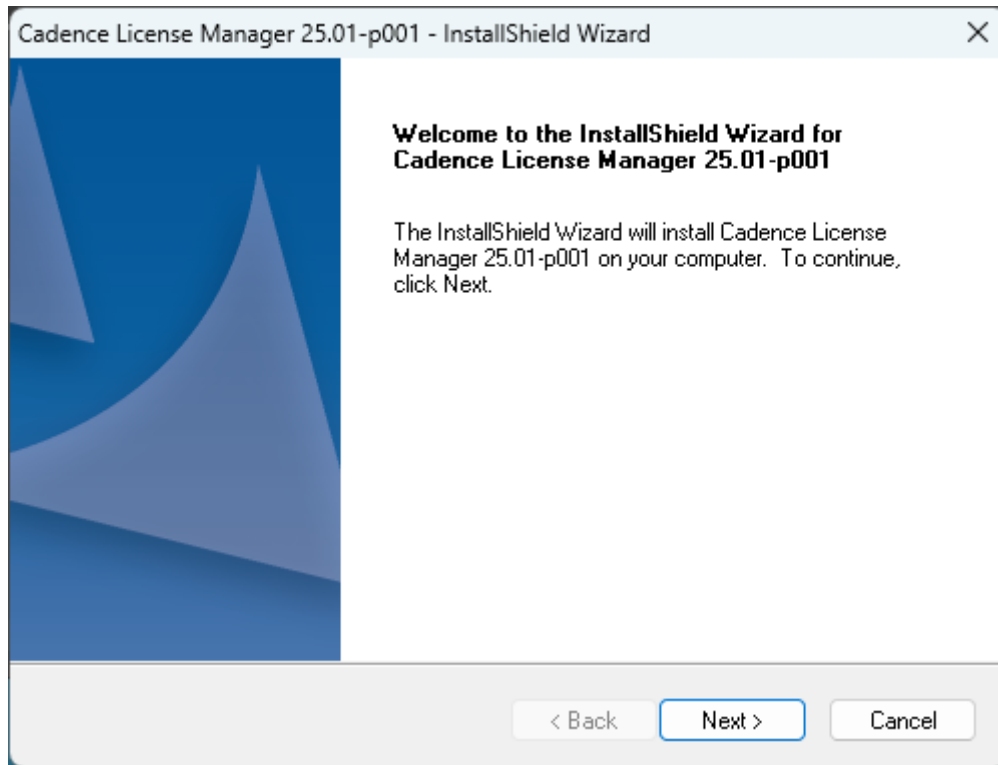
Note at creation of this document version 25.01.0001 is displayed, this may have changed to a newer version.



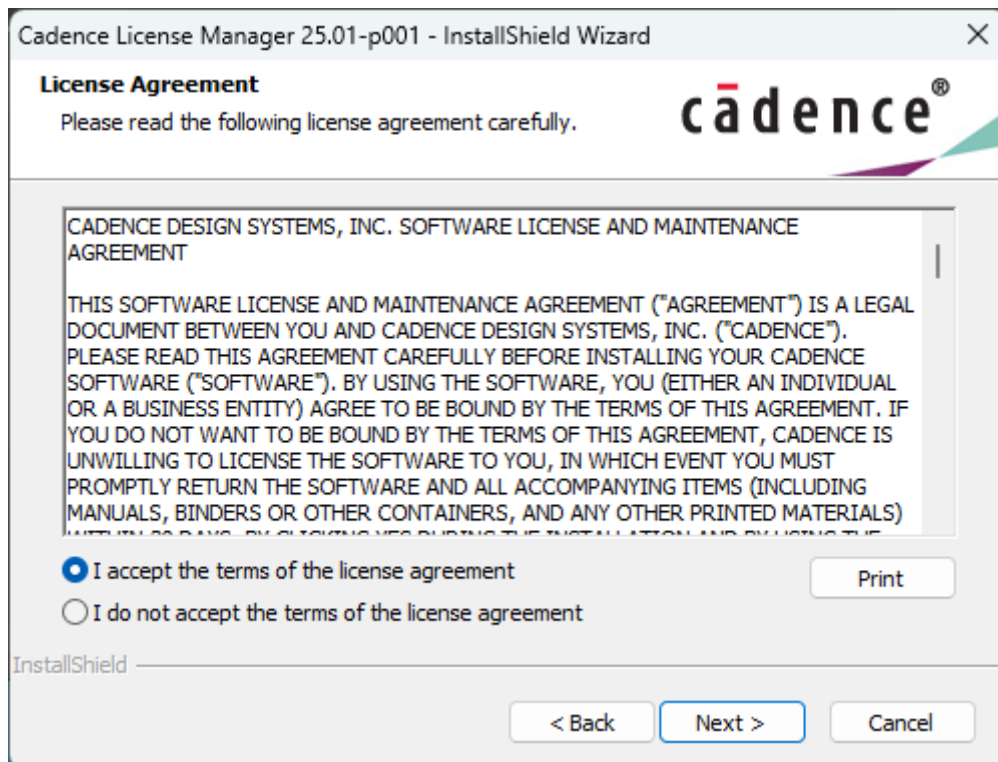
First the license manager software will be downloaded, next it will display picture below. Press Install Now.



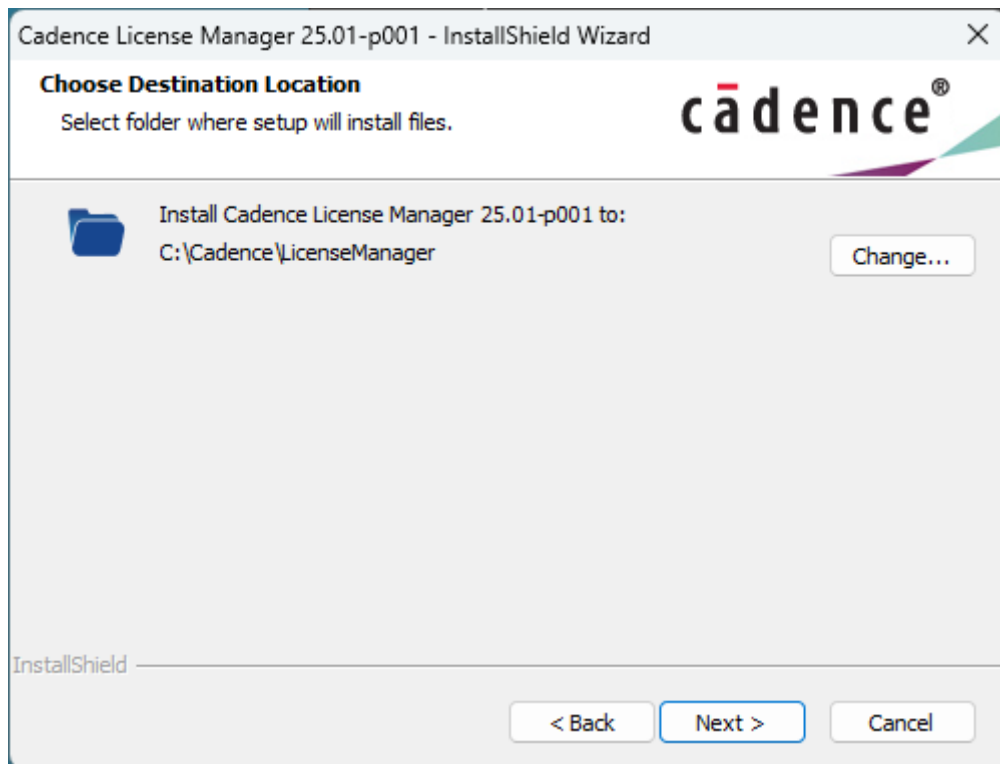
Press Next:



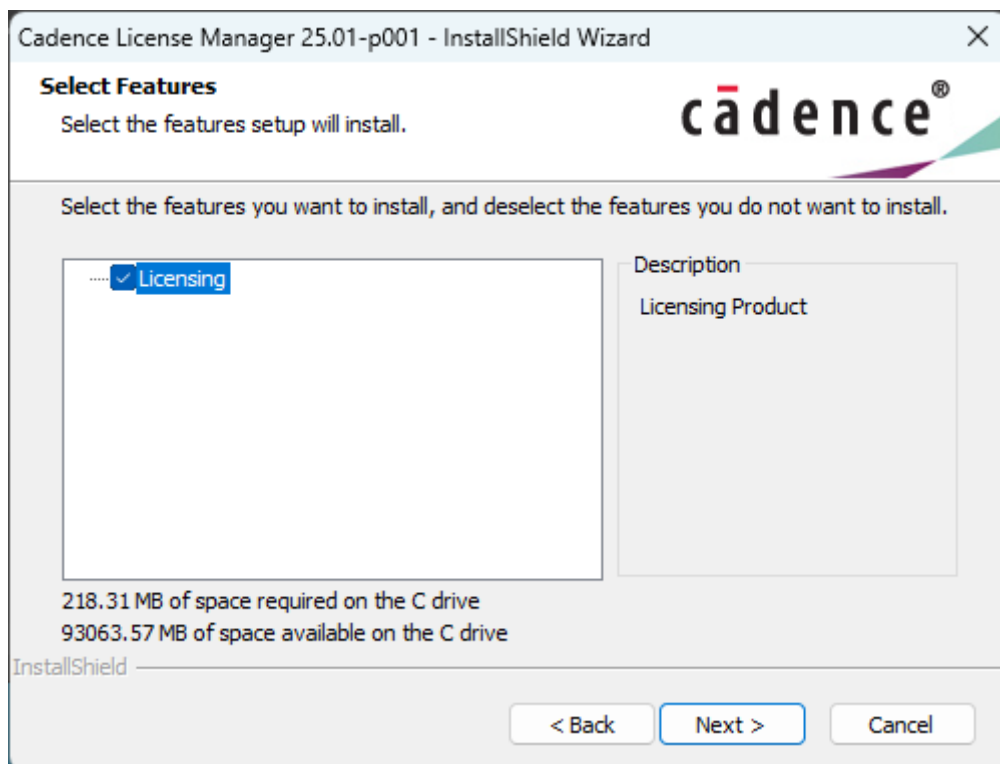
Accept the terms of the license agreement, press Next.



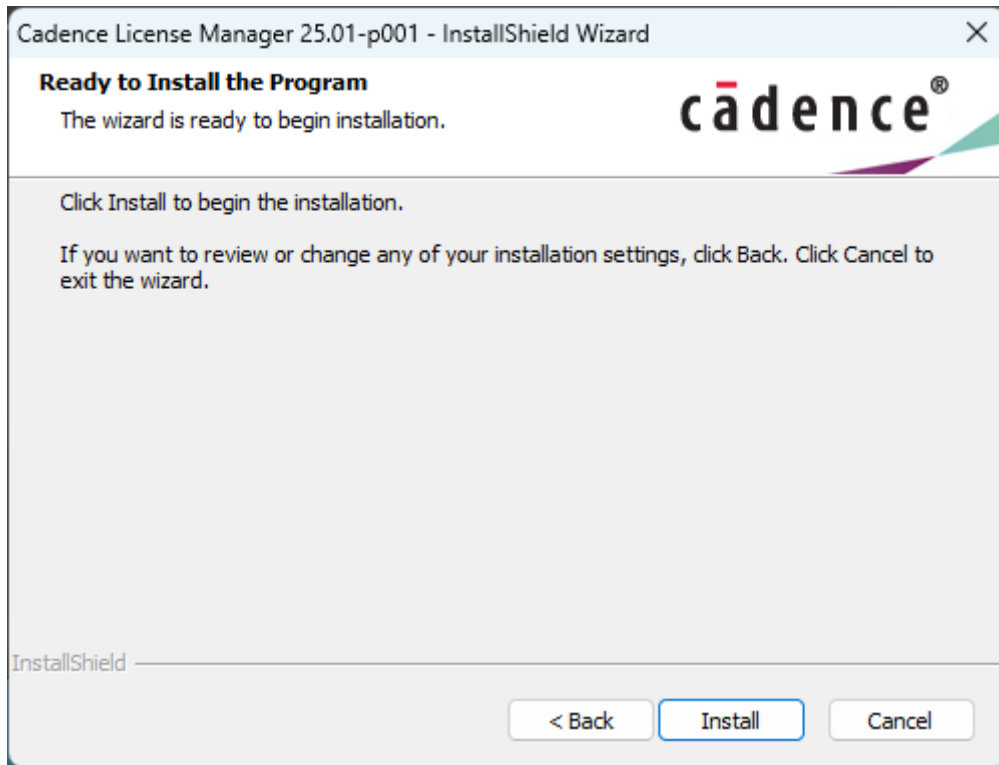
Provide an installation directory. We recommend to keep the default.



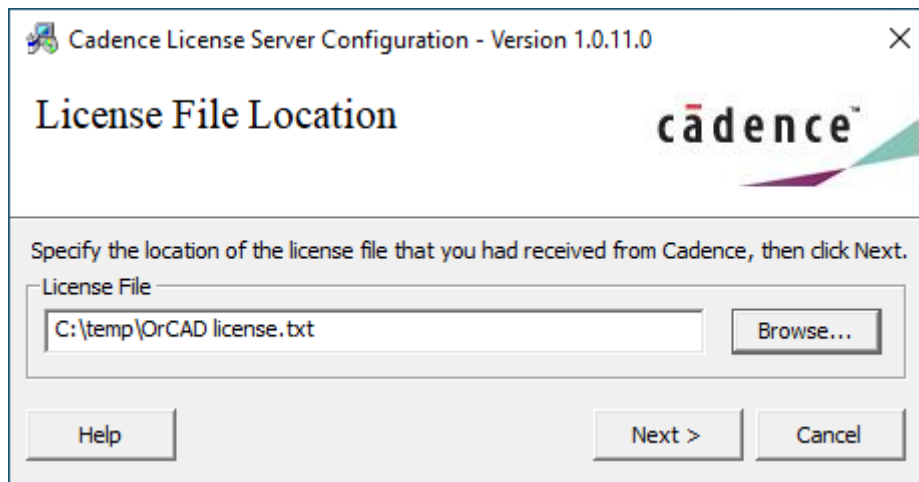
Press Next



Press Install

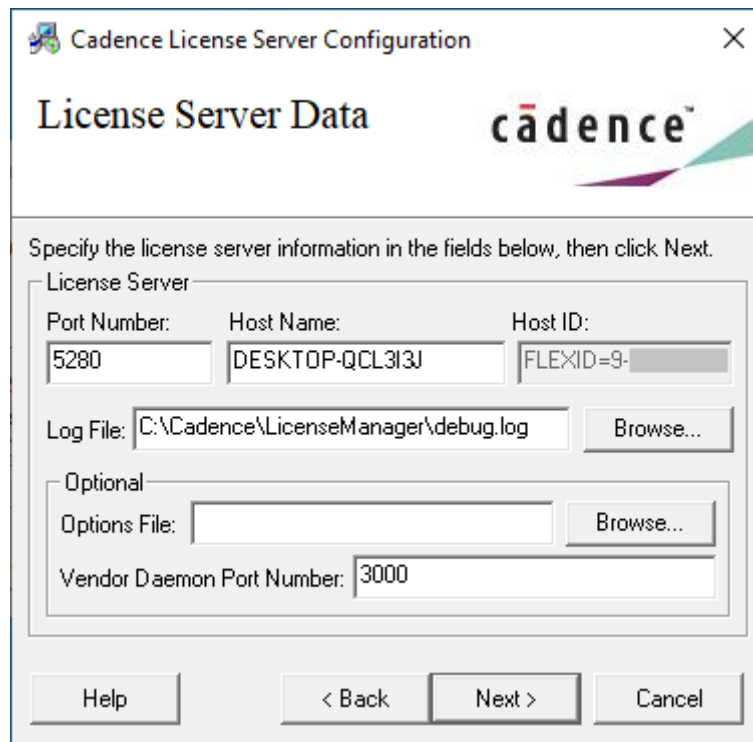


Provide the license file send by us and press Next.



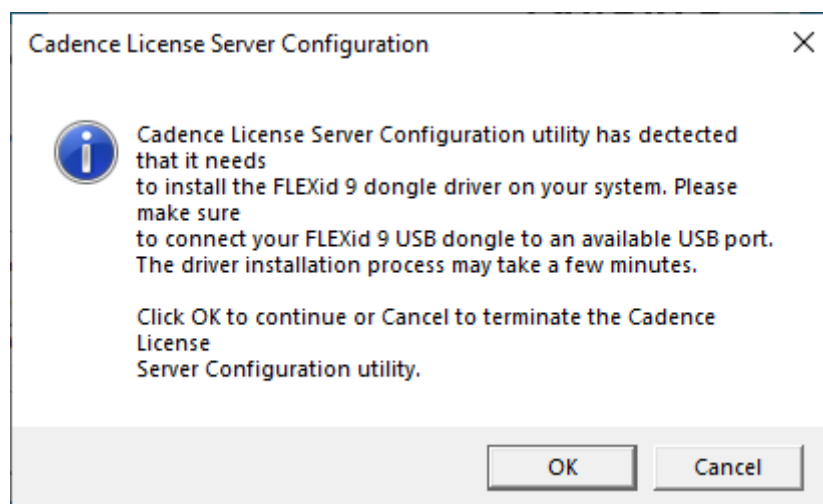
Default information of your PC/Server will be displayed. If you've received a USB-dongle from us, have it inserted now. Based on the supplied license file the tool will know and install the required drivers. To check if your license requires a USB-dongle, check the Host ID field if it starts with 9-..... If not the ID is based on MAC-address.

Press Next.



The image shows a Windows-style dialog box titled "Cadence License Server Configuration". It has a close button (X) in the top right corner. Below the title bar, the text "License Server Data" is displayed next to the Cadence logo. A message says: "Specify the license server information in the fields below, then click Next." The dialog contains several input fields: "Port Number" with the value "5280", "Host Name" with the value "DESKTOP-QCL3I3J", and "Host ID" with the value "FLEXID=9-". Below these is a "Log File" field with the path "C:\Cadence\LicenseManager\debug.log" and a "Browse..." button. There is also an "Optional" section with an "Options File" field and a "Browse..." button. At the bottom, there is a "Vendor Daemon Port Number" field with the value "3000". At the very bottom of the dialog are four buttons: "Help", "< Back", "Next >", and "Cancel".

This picture will only be displayed if the license is based on a USB-dongle. Press OK

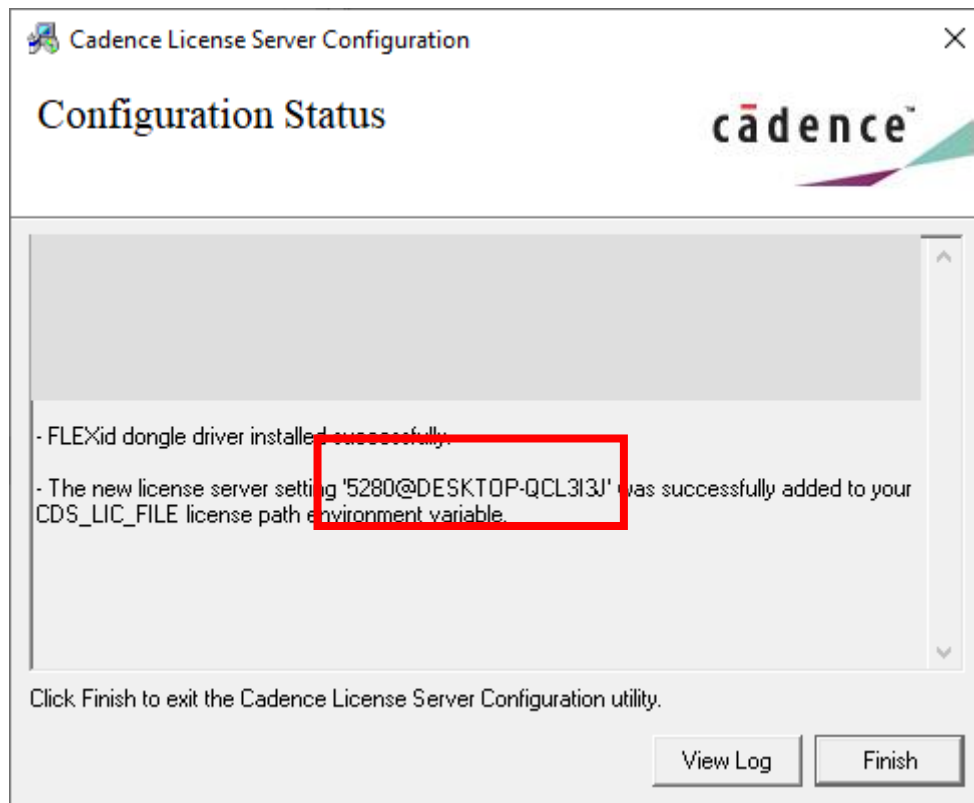


The image shows a Windows-style dialog box titled "Cadence License Server Configuration" with a close button (X) in the top right corner. It contains an information icon (i) and a message: "Cadence License Server Configuration utility has detected that it needs to install the FLEXid 9 dongle driver on your system. Please make sure to connect your FLEXid 9 USB dongle to an available USB port. The driver installation process may take a few minutes." Below the message, it says: "Click OK to continue or Cancel to terminate the Cadence License Server Configuration utility." At the bottom of the dialog are two buttons: "OK" and "Cancel".

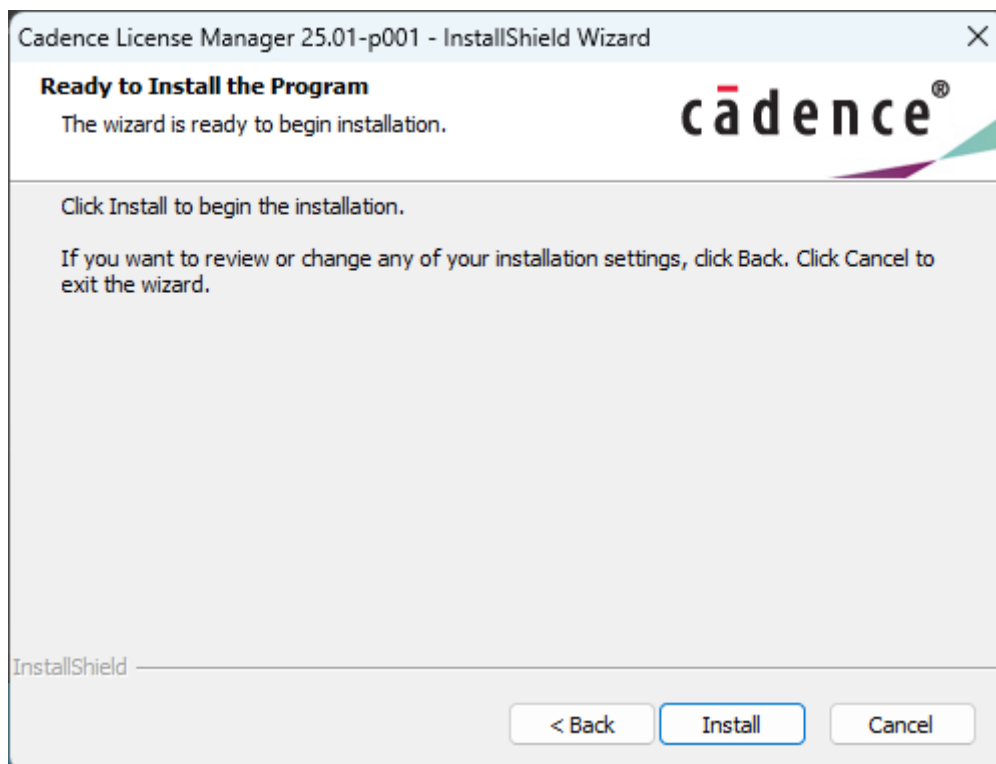
After completing the final steps a summary is shown, press Finish.

Write down server setting shown in the red box, you might need it later.

The exact value may be different on your system



Press Finish to close the installer.



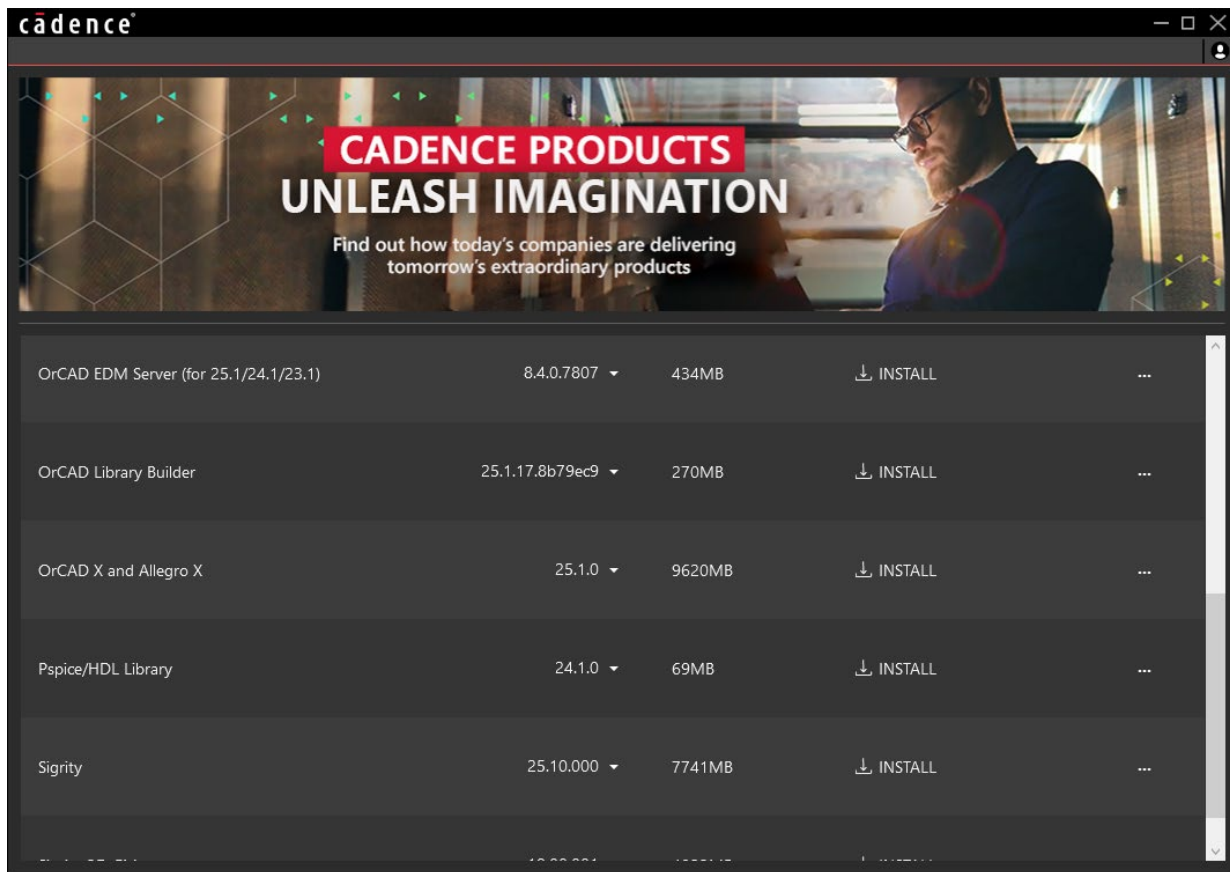
3. SPB 25.1 Software installation

Important notice, for a smooth installation process you need administrator privileges!

If not started yet ,Start the “Cadence Download Manager” from the Windows start menu:

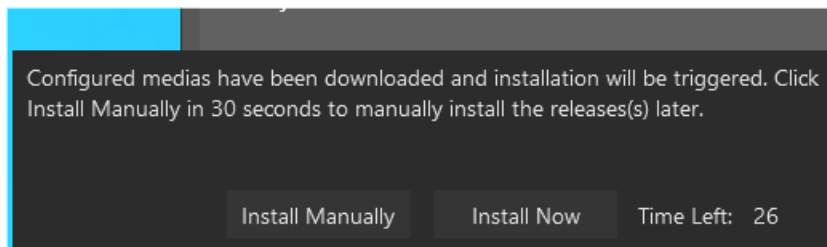
Start -> Cadence -> Download Manager

Select “OrCAD X and Allegro X” and press on INSTALL. Be aware this will download approximately 13Gb on installer files. *Note at creation of this document version 25.1.0 is displayed, this may have changed to a newer version.*



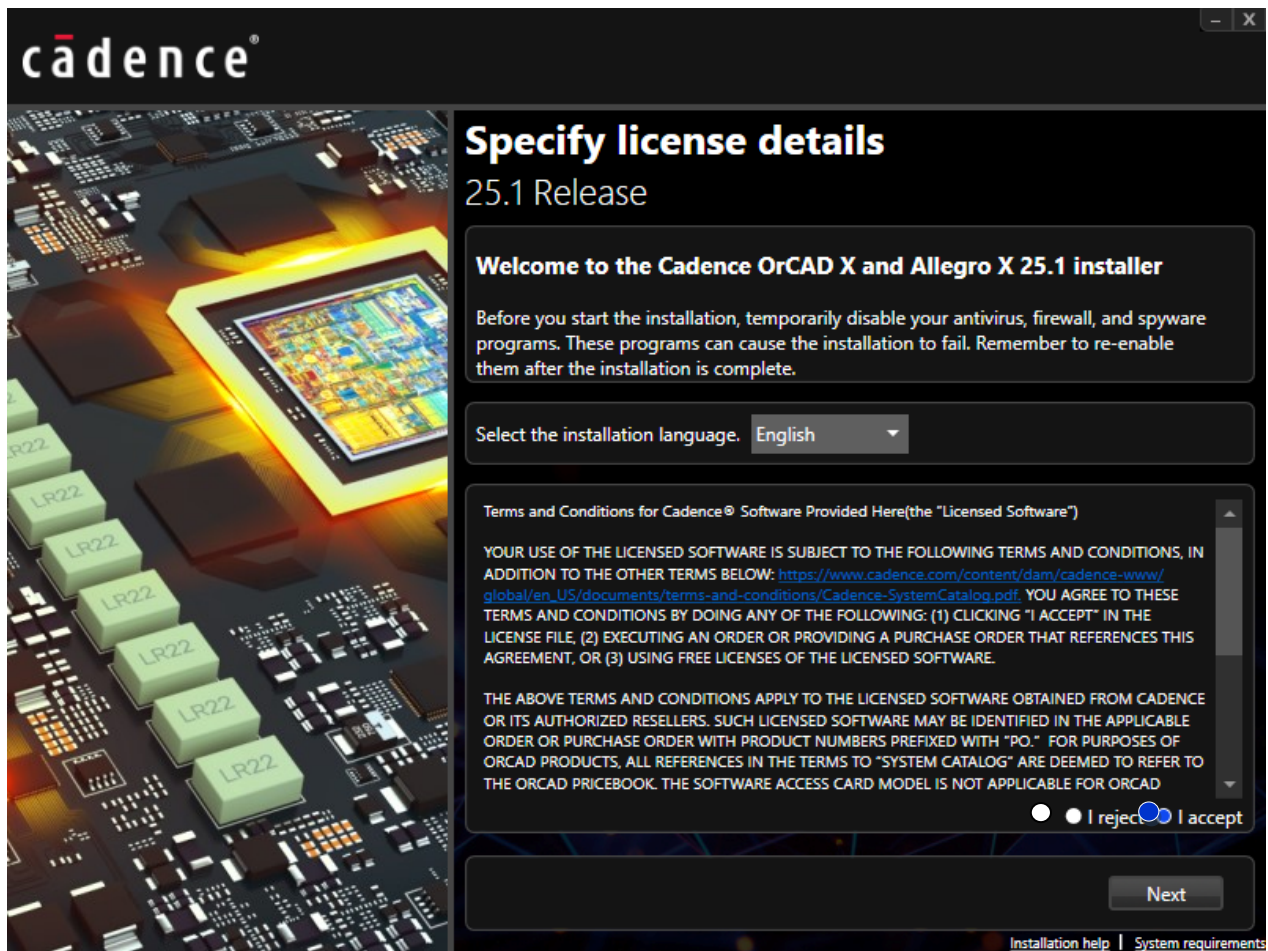
Click on the INSTALL button.

After downloading it will show picture below:

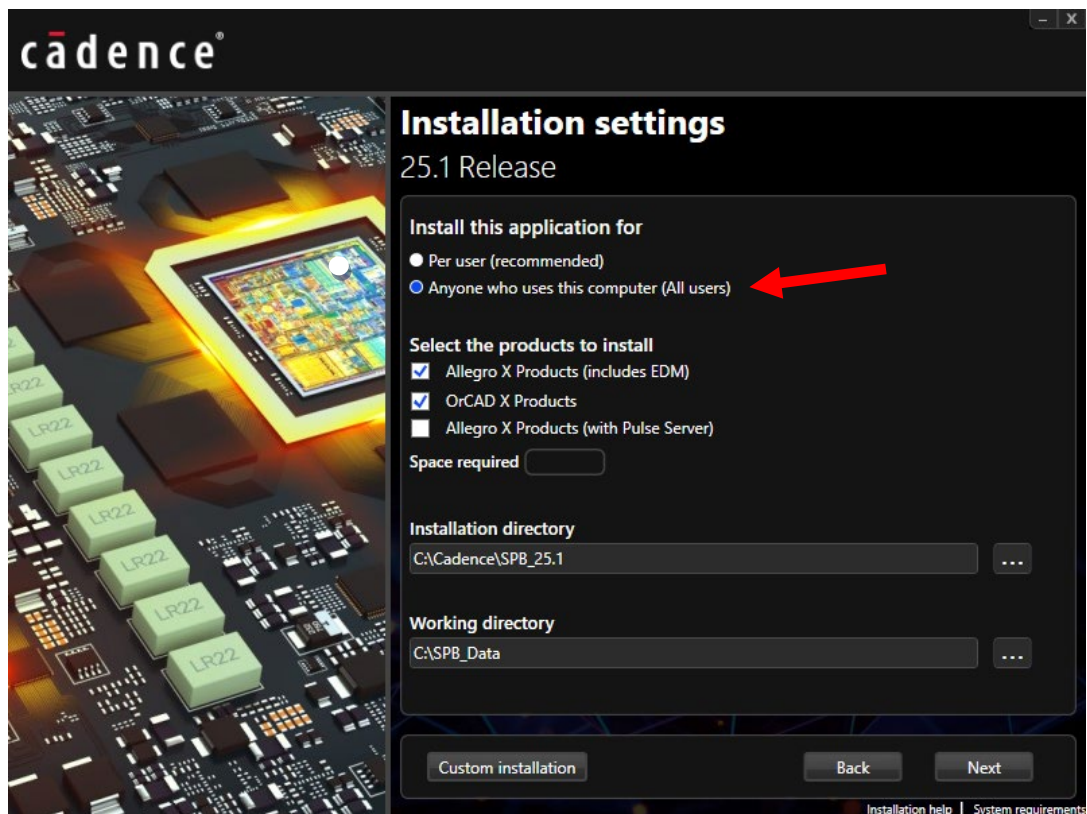


Press Install Now.

Accept the terms of the license agreement, press Next.

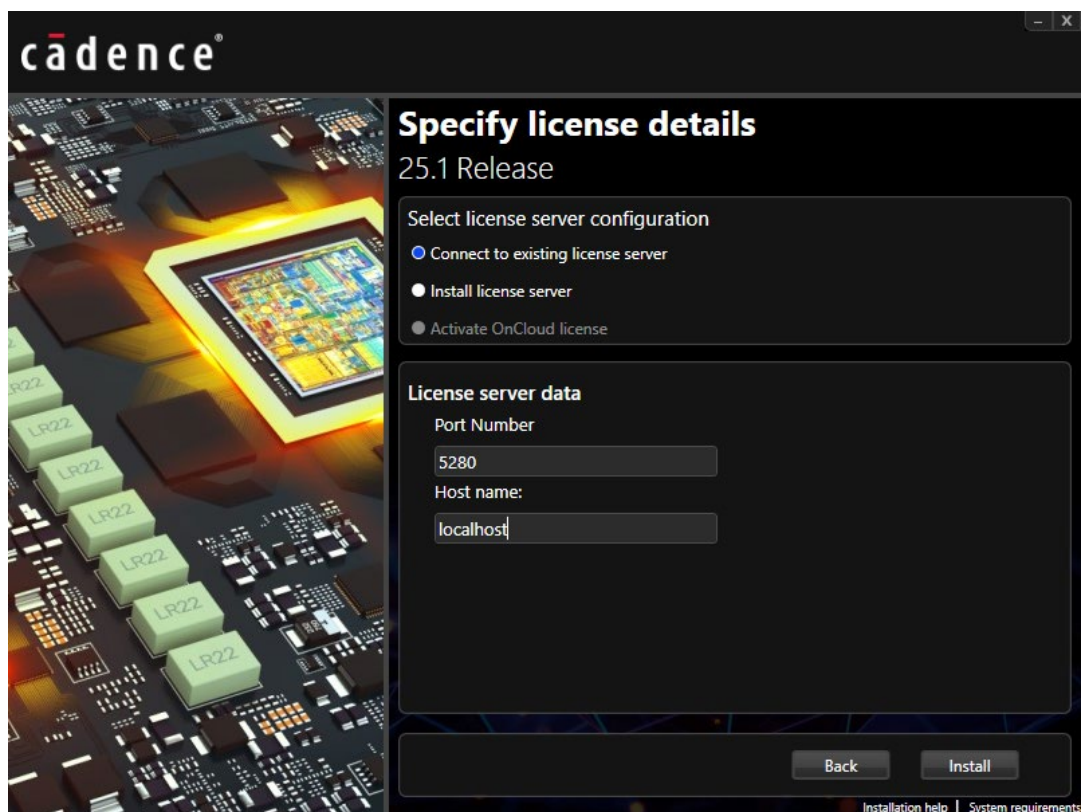


Select “Anyone who uses this computer (All Users)”, press Next
If you can’t select this option then check your privileges again.

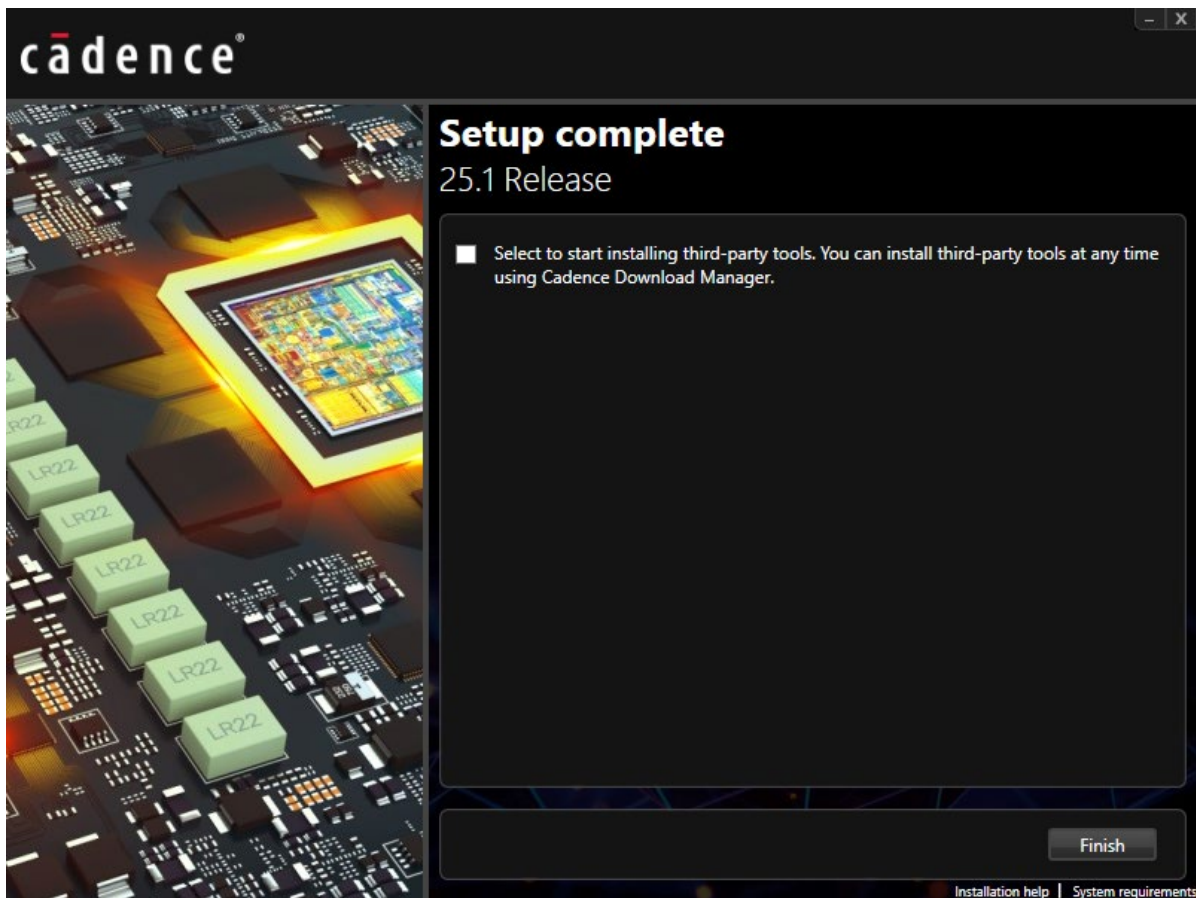


Select “Connect to Existing License Server”. If you’ve installed the license manager software in step 2 on the same PC, you can leave the default values and press Install.

If you’ve an external license server, fill-in the correct Port Number and Host Name.



After installation completes you can press Finish and can close the “Cadence Download Manager”.



Product entries can be found below “Cadence OrCAD X and Allegro X 25.1” group.



4. FAQ

License problems

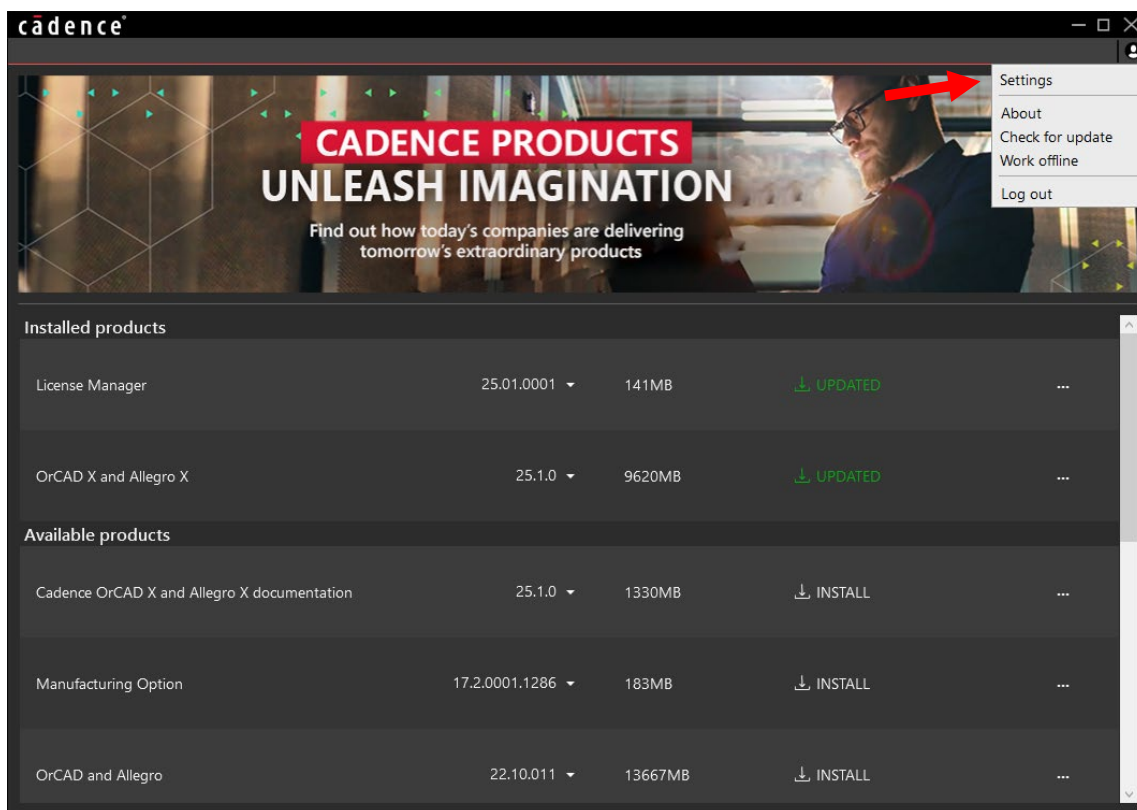
If for some reason you get a license error message during start of the products. Please send us the following:

1. Snapshot (print screen) of the error message
2. Below file from the machine on which the license manager software is installed:
c:\cadence\LicenseManager\debug.log

After receiving above details we will analyse this and contact you to assist.

Where does the “Cadence Download Manager” stores its data?

Once you login in the “Cadence Download Manager”, top right you’ll see a small icon, click and press Settings. This window amongst some other settings shows the path where the “Cadence Download Manager” stores its data.



Can the “Cadence Download Manager” automatically download latest hotfix and perform installation?

Yes it can, open the settings window, see above. Within the settings window you can configure which day and time the “Cadence Download Manager” should check for new updates and what to do with them if they exist.

The following are trademarks or registered trademarks of Cadence Design Systems, Inc. 555 River Oaks Parkway, San Jose, CA 95134
Allegro®, Cadence®, Cadence logo™, Concept®, NC-Verilog®, OrCAD®, PSpice®, SPECCTRA®, Verilog®

Other Trademarks

All other trademarks are the exclusive property of their prospective owners.

NOTICE OF DISCLAIMER: CB Distribution BV is providing this design, code, or information "as is." By providing the design, code, or information as one possible implementation of this feature, application, or standard, CB Distribution BV makes no representation that this implementation is free from any claims of infringement. You are responsible for obtaining any rights you may require for your implementation. CB Distribution BV expressly disclaims any warranty whatsoever with respect to the adequacy of the implementation, including but not limited to any warranties or representations that this implementation is free from claims of infringement and any implied warranties of merchantability or fitness for a particular purpose.